

CENTRAL PENNSYLVANIA
Youth Ballet
CPYB.org

Teachers Workshop

August 12–17, 2012

Marcia Dale Weary, Founding Artistic Director
Darla Hoover, Associate Artistic Director

A special workshop for dance teachers,
focusing on the syllabus of world-renowned
ballet teacher Marcia Dale Weary.



5 North Orange Street, Suite 3 | Carlisle, PA 17013-2727 | 717.245.1190 | info@cpyb.org | CPYB.org



About the Workshop

CPYB Teachers Workshop is part of CPYB's August intensive. Teachers will have the opportunity to observe students in class Monday through Friday from 9 a.m. to 1 p.m. Classes are taught by CPYB faculty.

Classes and Seminars

Classes and seminars are held at CPYB's six state-of-the-art Warehouse Studios and the four historic Barn Studios in Carlisle, Pennsylvania.

Lodging

Lodging is available at the nearby Comfort Suites hotel located at 10 South Hanover Street in downtown Carlisle. Hotel accommodations include a complimentary breakfast. Lodging and CPYB studios are conveniently located near numerous restaurants and grocery stores. For reservations please call 717.960.1000 or 1.800.704.1188. Be sure to mention code LCPYBP. Reservations must be made by Thursday, July 12 in order to take advantage of the CPYB block rate.

Tuition

Tuition for the CPYB Teachers Workshop is \$750. Of the \$750 tuition, a \$200 non-refundable deposit is required to hold the applicant's place and must be received by July 2, 2012. (A 50% refund on the \$550 balance is available for cancellations through August 11. No refund is available after August 12, 2012.)

Schedule

Participants are asked to arrive Sunday evening, August 12, for an informal orientation over wine and hors d'oeuvres. The orientation will be held in CPYB Warehouse Studios from 5:30–7:00 p.m. Activities will begin on Monday morning at 9 a.m. The following is a typical daily schedule:

Observations

- 9:00–10:00 a.m. Beginner classes
- 10:00–11:30 a.m. Intermediate classes
- 11:30 a.m.–1:00 p.m. Advanced classes (optional)
- 1:00–2:00 p.m. Lunch

Interactive Sessions: Syllabus

- 2:00–5:00 p.m. Hands-on sessions in the studio with Ms. Weary, Ms. Hoover and CPYB faculty members.
- 5:00–5:30 p.m. Break

Evening Sessions*

- 5:30–7:00 p.m. Evening sessions on various subjects such as choreography for beginning students, pas de deux for beginners, and more.

**Please note that evening sessions take place on Monday, Tuesday and Thursday.*

Central Pennsylvania Youth Ballet

About Central Pennsylvania Youth Ballet

Established in 1955 by Founding Artistic Director Marcia Dale Weary, Central Pennsylvania Youth Ballet (CPYB) is a nationally and internationally recognized school of classical ballet headquartered in Carlisle, Pa. CPYB has grown from a small, local dance studio into a sprawling 10-studio facility with locations in Carlisle and Lemoyne.

Under Ms. Weary's guidance, CPYB provides exceptional classical ballet training for beginners to pre-professional students and enhances the region's cultural climate through ballet performances. Ms. Weary began producing full-length ballets in the 1960s at the local Carlisle High School auditorium with a handful of loyal dance enthusiasts. Today, more than 12,000 patrons annually enjoy the beauty of classical ballet. As the Resident Ballet Company of Whitaker Center for Science and the Arts in Harrisburg, the CPYB performing company's season includes a vast repertoire of performances of classical and neo-classical ballets. The company regularly premieres new works by nationally recognized choreographers and is honored as the only pre-professional company in the country licensed to perform *George Balanchine's The Nutcracker*.™

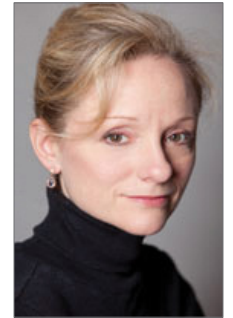
More than 20,000 students have passed through CPYB. Unrivaled among ballet schools not affiliated with a major professional company, CPYB continually produces dancers for the top companies in the world. Currently, more than 70 alumni occupy positions in highly regarded ballet companies such as the New York City Ballet, American Ballet Theatre, San Francisco Ballet, Boston Ballet, Pacific Northwest Ballet, Miami City Ballet and Pennsylvania Ballet, to name a few. Others have continued on in dance-related fields such as ballet teaching and arts administration. CPYB alumni, no matter what their vocation, are enthusiastic audience members and arts advocates in our communities.



Marcia Dale Weary
Founding Artistic Director

Marcia began her teaching career in Carlisle, Pa., in 1955 after her own studies with Thalia Mara and Arthur Mahoney at the School of Ballet Repertory in New York City. Her unequalled dedication to her school, students, and instructors, and

her unique teaching style have brought Central Pennsylvania Youth Ballet to the top of the dance field. The New York Times stated that Weary is "considered one of the country's foremost ballet teachers." Ms. Weary is the 1992 recipient of the Distinguished Service to the Arts Award for Central Pennsylvania. In February 2000 she became the first recipient of the Carlisle Regional Arts Award. She is the 2007 recipient of the Pennsylvania Governor's Award for the Arts for her Outstanding Leadership and Service to Youth and the 2009 Distinguished Citizen of the Commonwealth recipient. In 2010 Ms. Weary was recognized as one of central Pennsylvania region's most influential women for her leadership, integrity and accomplishments. Most recently she was awarded an Honorary Doctorate of Performing Arts from Dickinson College in recognition of her contributions to the performing arts.



Darla Hoover
Associate Artistic Director

Ms. Hoover was trained at the renowned Central Pennsylvania Youth Ballet under the direction of Marcia Dale Weary and completed her studies on a full scholarship at the School of American Ballet. In 1980, after choreographing a solo for her in the New York City Opera production of *Bourgeois Gentleman*, George Balanchine invited Ms. Hoover to become a member of his New York City Ballet. From 1980-1991, Ms. Hoover appeared as a featured soloist in ballets such as Balanchine's *La Valse*, *Chaconne*, *Harlequinade*, *Ballo della Regina*, as well as Peter Martins' *Eight Easy Pieces*, *Rossini Quartets*, *Sonata di Scarlatti*, and Jerome Robbins' *Fanfare*. Ms. Hoover now focuses her attention on teaching and staging ballets. In addition to her positions as Associate Artistic Director of Central Pennsylvania Youth Ballet and Associate Artistic Director of Ballet Academy East's graded children's program in Manhattan, Ms. Hoover guest teaches all over the world. Working as a distinguished répétiteur, Ms. Hoover stages works for the George Balanchine Trust and for Peter Martins, Ballet Master-in-Chief of the New York City Ballet. Recent stagings have included *George Balanchine's The Nutcracker*™, *Raymonda Variations*, *Serenade*, *Divertimento #15*, *Valse Fantaisie*, *Allegro Brillante*, *Stars and Stripes* and *Rubies* as well as Peter Martins' *Eight Easy Pieces* and *Fearful Symmetries*.